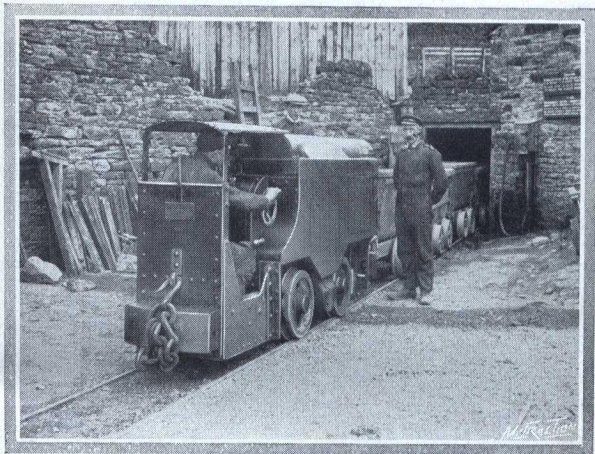


“New Century” MOTOR LOCOMOTIVES.



**ALWAYS READY FOR USE.
RUNS ON PETROL, PARAFFIN OR BENZOL.**

The illustration shows a 12-h.p. “New Century” Locomotive, which runs over five miles underground in an English mine. The level is a very narrow one. It contains several ‘S’ curves, and in places the track is under water.

The Locomotive has replaced 4 horses and 4 drivers, and handles 160/200 tons of ore per day.

It is driven by one of the former horse drivers.

The first machine was so successful that a second was ordered from us after the lapse of a few months.

IRONSIDE, SON & CO.,
7, Gracechurch St., London, E.C. 3.