

FIG. 24. Basset Mine.

Generalized cross-section showing the relation of the Great Flat Lode to the more vertical lodes and to the granite-killas junction. The depths of the levels are given in fathoms below adit. Based on a diagram by M. Maclaren for East Pool and Agar Mines Ltd.

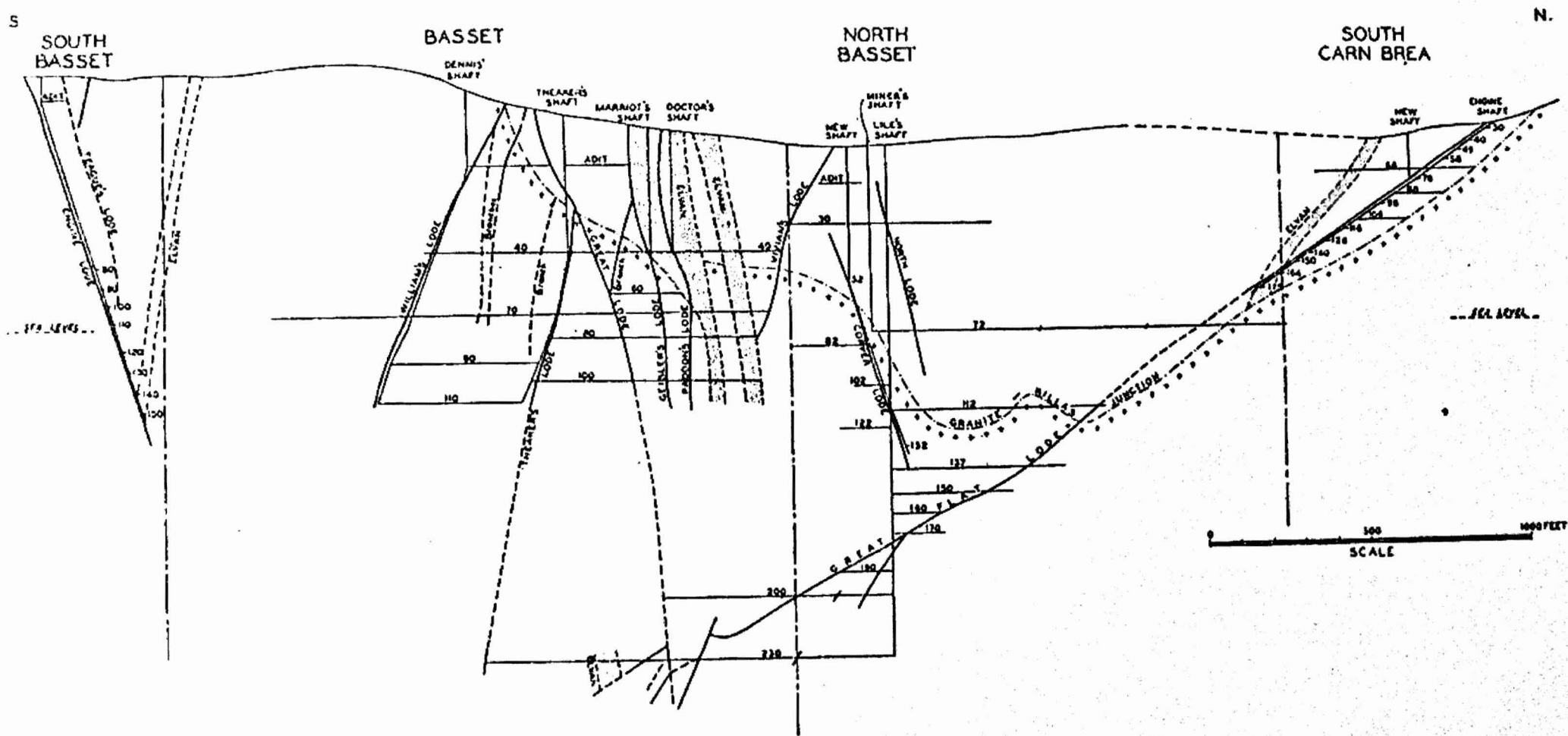


FIG. 25. *The Basset Mines and South Carn Brea.*

Generalized transverse section showing the relation of the Great Flat Lode to the more vertical lodes and to the granite-killas junction. Based on a diagram by M. Maclaren for East Pool and Agar Ltd., also Collins (1873) and Maynard (1873). The depths are given in fathoms below adit; those of South Carn Brea are below adit at the shaft of that mine which is west of the line of section and are measured in the plane of the lode.