

**AUSTRALIAN MINING HISTORY ASSOCIATION  
ANNUAL CONFERENCE, KADINA JULY 5-9, 2006**

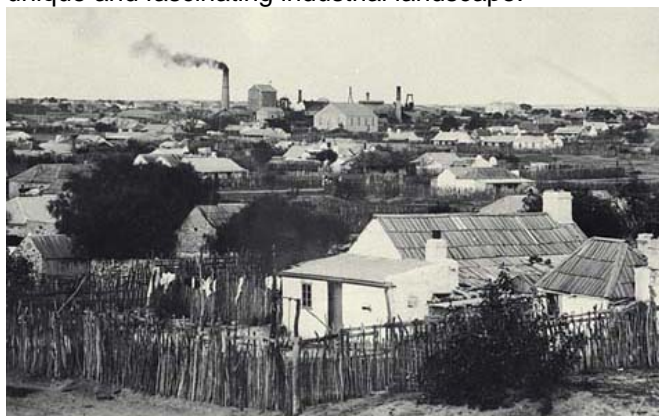
**The Copper Triangle – *Australia's Little Cornwall***



*Elders Lode, Moonta Mine, 1898*

The next annual conference of the Australian Mining History Association will be held at Kadina in South Australia's Copper Triangle from 5-9 July 2006. The historic copper towns of Moonta, Kadina and Wallaroo form what is known as the Copper Triangle. Copper was first discovered in the area in 1859 by a shepherd which caused a rush for mining leases. This led to the establishment of the Wallaroo (at Kadina) and Moonta Mines which worked from 1860 until 1923 and formed one of the largest copper producing areas in the world in the late 19<sup>th</sup> century.

The mines were worked largely by skilled Cornish miners and the area became known as *Australia's Little Cornwall*. The Moonta Mine was the first mine in Australia to pay one million pounds in dividends. The town of Moonta and the mines area contained the largest urban population outside Adelaide. The port of Wallaroo was the site of smelting works to treat ore from the nearby mines. For a time it was the largest copper smelting works outside Swansea. The Moonta-Wallaroo mines produced a total of about 350,000 tonnes of copper which amounted to nearly half of the total mineral production in South Australia up to 1924. Today, the area's mine and smelting sites and settlements form a unique and fascinating industrial landscape.



*Moonta Mines settlement, 1870*



*Wallaroo Smelting Works, 1870*



*Wallaroo Mine, 1915*

## REGISTRATION AND OPEN HOUSE

The conference will feature presentations on a variety of topics, including a number devoted to the history of the Copper Triangle.

Registration and all presentations will be in the Kadina Visitor Centre adjacent to the Matta Mine at the eastern end of the famous Wallaroo Mine Lode. The adjacent National Trust Farm Shed Museum which includes Matta House built in 1863 for the manager of the Matta Mine will be open free for registrants during registration.

A guided tour (free to all registrants) of the Wallaroo Mines Historic Site including Harveys Enginehouse, will be provided during the registration period.



## SOCIAL EVENTS

On Wednesday evening the Copper Coast Council will host a Welcoming Reception in the Kadina Town Hall following the Open House. This will be included in the registration fee. There will be a barbeque lunch in the Visitor Centre on Thursday. That evening a Social Event will be held in the Wallaroo Town Hall with entertainment provided by local groups. The Conference Dinner will be held on Friday evening in an historic Moonta venue.

## TOURS

A number of tours to sites of interest in the Copper Triangle will be interspersed throughout the program.

A bus tour will give an overview of the history and development of Kadina and the coastal town of Wallaroo, which was once the site of the largest copper smelter outside Wales. It will include the smelter site and the Heritage and Nautical Museum.



*Hughes Enginehouse, Moonta Mine*

A special two-hour tour of Wheal Hughes tourist mine has been arranged. This mine was developed in the late 1980s as an open cut and later as an underground mine. An alternative tour of the Moonta cemetery will be provided for those not wishing to go underground. There will also be a guided walking tour of Moonta.

## POST CONFERENCE TOURS

Sunday will highlight the Moonta Mines State Heritage Area. In the morning you will visit the National Trust sites including the Moonta Mines School Museum, Tourist Railway, Miners Cottage, Moonta Mines Uniting Church and Moonta Mines settlement. In the afternoon the tour will cover the 1.5 km length of Elders Main Lode including Hughes and Richmans Cornish enginehouses.

Inspection of other mines in the Moonta district will be arranged for Monday July 10 if there is sufficient interest.



*Moonta Mines Museum*

## GETTING TO KADINA

Kadina is about 2 hours drive from Adelaide. For those without a vehicle or who prefer not to drive, mini-buses will leave Adelaide on Wednesday morning July 5, arriving in Kadina late morning. The buses will return after the Moonta Mine Tour arriving in Adelaide on Sunday evening July 9.

## KADINA FACTS

Kadina, at near sea level, has a Mediterranean climate with a cool, moist winter. The average annual rainfall is 370mm with most rain falling between April and October. Average temperatures for July are about 8°C minimum and 15°C maximum.

## ACCOMMODATION

A wide range of accommodation is available in the Copper triangle towns of Kadina, Moonta and Wallaroo. Conference block bookings at special rates will be made at a Kadina motel.

## CONFERENCE INFORMATION

Please contact the conference organisers:

Peter Bell, tel 08-8373 1900

e-mail: [pbell@adelaide.on.net](mailto:pbell@adelaide.on.net)

Greg Drew, tel 08-8463 3270

e-mail: [drew.greg@saugov.sa.gov.au](mailto:drew.greg@saugov.sa.gov.au)

Graham Hancock, tel 08 8821 2333

e-mail: [ghancock@yp-connect.net](mailto:ghancock@yp-connect.net)