

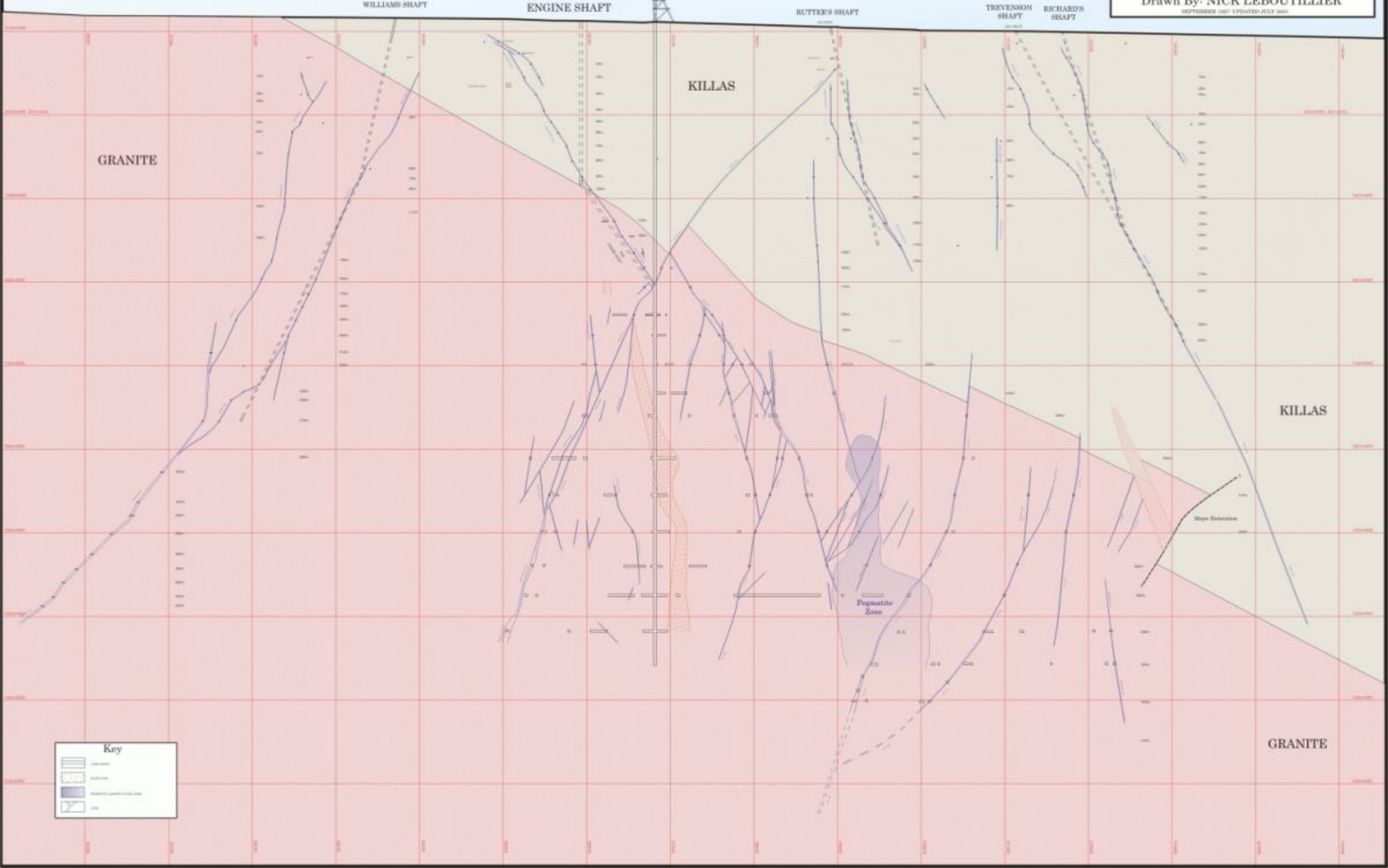
NEW COOK'S KITCHEN SHAFT

SECTION THROUGH NEW COOK'S KITCHEN SHAFT SOUTH CROFTY MINE

425m West: Geological Grid

Drawn By: NICK LEBOUTILLIER

SEPTEMBER 1987 UPDATED JULY 1993



GRANITE

KILLAS

KILLAS

GRANITE

Key

- Shaft
- Fault
- Pegmatite Zone
- Major Discontinuity